

# ELWIRA TITAN

## ADRIAN McDONALD

Exhibition dates 3 June - 27 June

### ANNANDALE GALLERIES

110 Trafalgar Street Annandale  
Sydney NSW 2038 Australia  
T (61-2) 9552 1699  
[annangal@ozemail.com.au](mailto:annangal@ozemail.com.au)

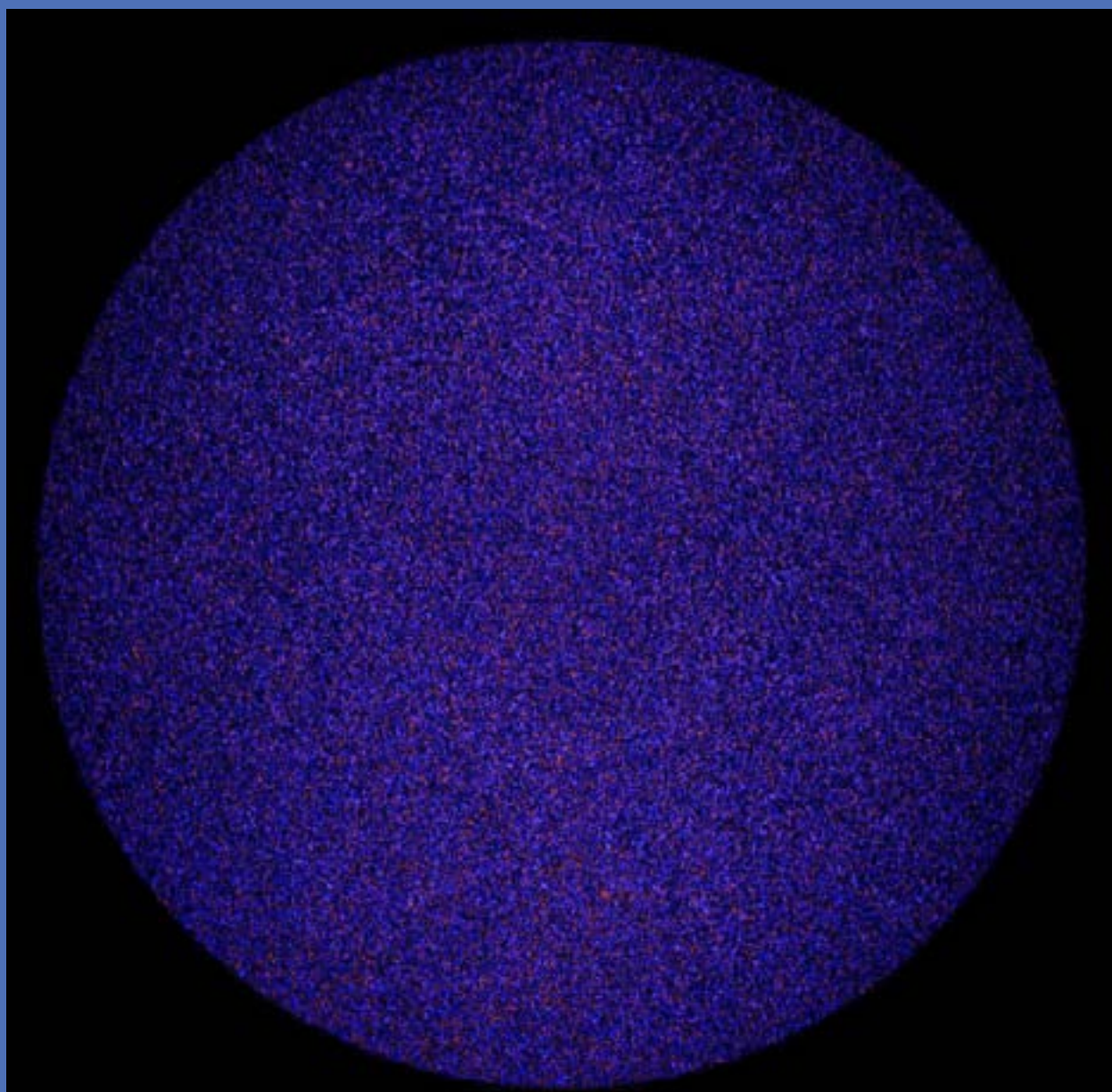
[www.annandalegalleries.com.au](http://www.annandalegalleries.com.au)  
Gallery Hours: Tuesday - Saturday 11:00 - 5:00 pm  
Directors Anne & Bill Gregory



# ELWIRA TITAN

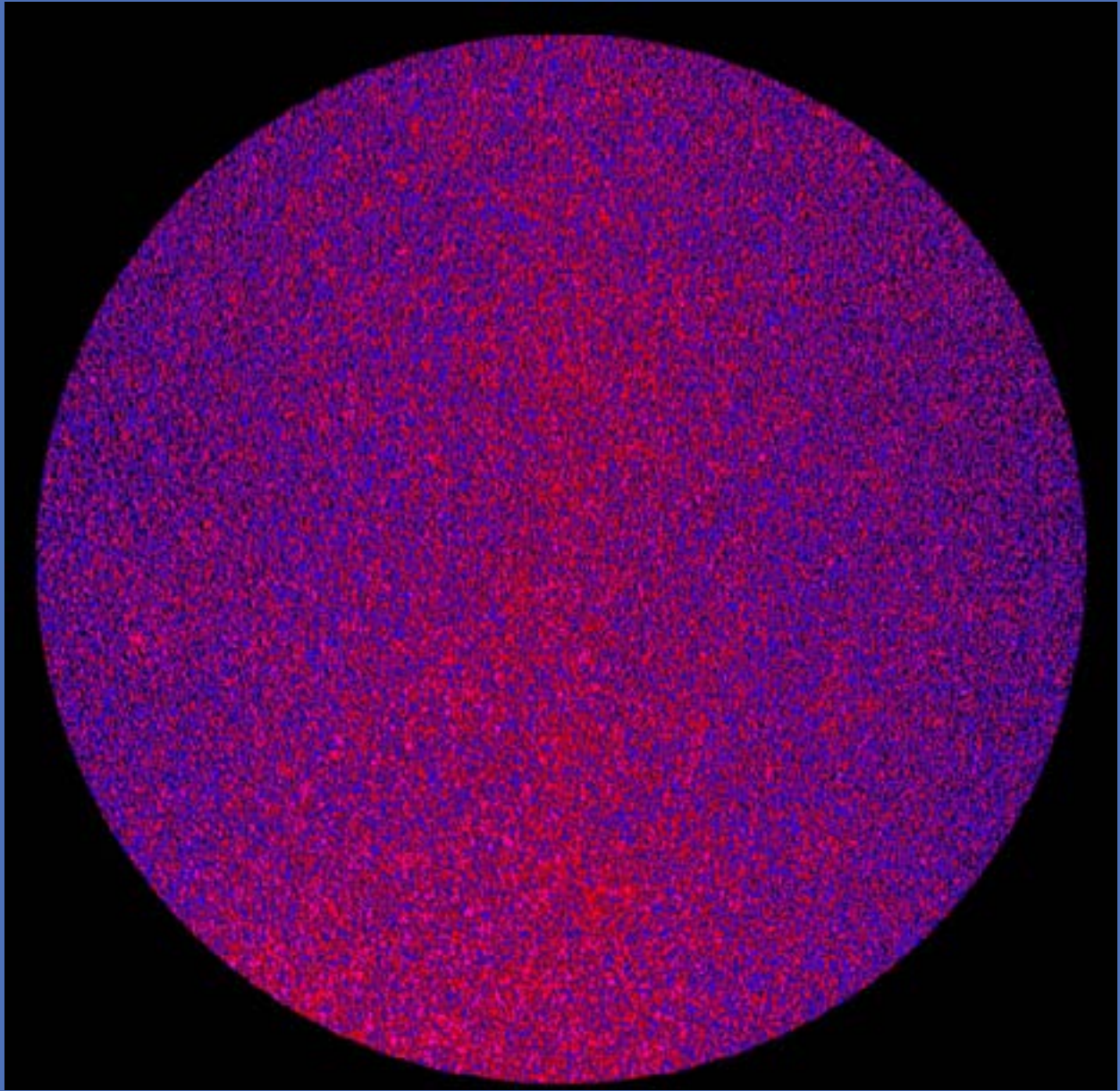
The sublime has recently returned as a key question in contemporary art. My work explores the rich possibilities of the sublime, not in the traditional sense of the infinitely large, but in the more contemporary sense of the infinitely small. By doing so I aim to create a visual dialogue that explores the infinity of minutiae based on the visual dynamics of binary codes.

Elwira Titan is completing a PhD in Painting at Sydney College of the Arts. This is her second exhibition at Annandale Galleries.



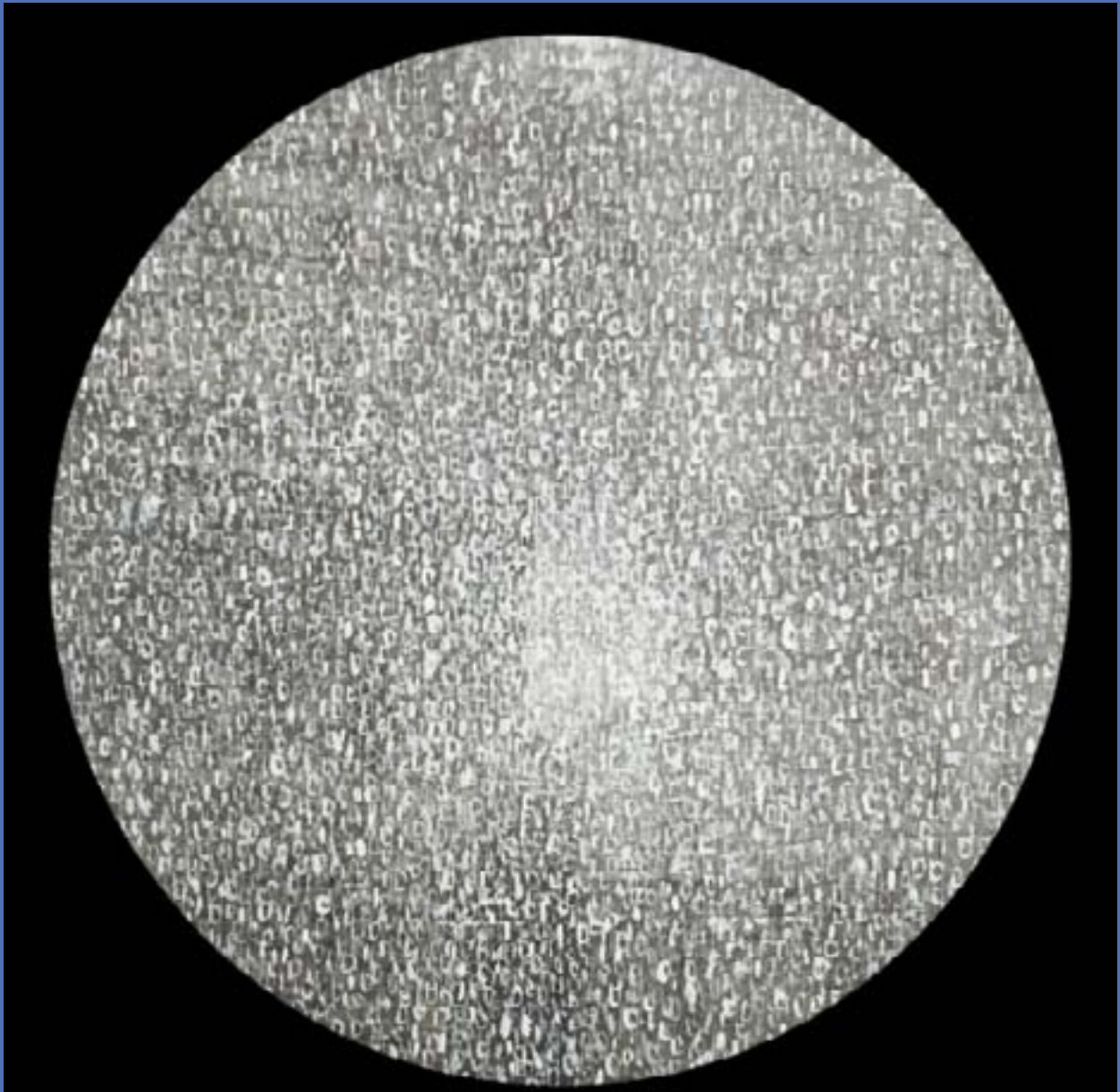
*spacetime-sublime\_2.2\_2015*, giclée print on Silver Rag

310gsm, dry mounted on a gate board, 100 x 100cm 2015



*spacetime-sublime\_95\_2015* giclée print on Silver Rag  
310gsm dry mounted on a gate board 100 x100cm 2015



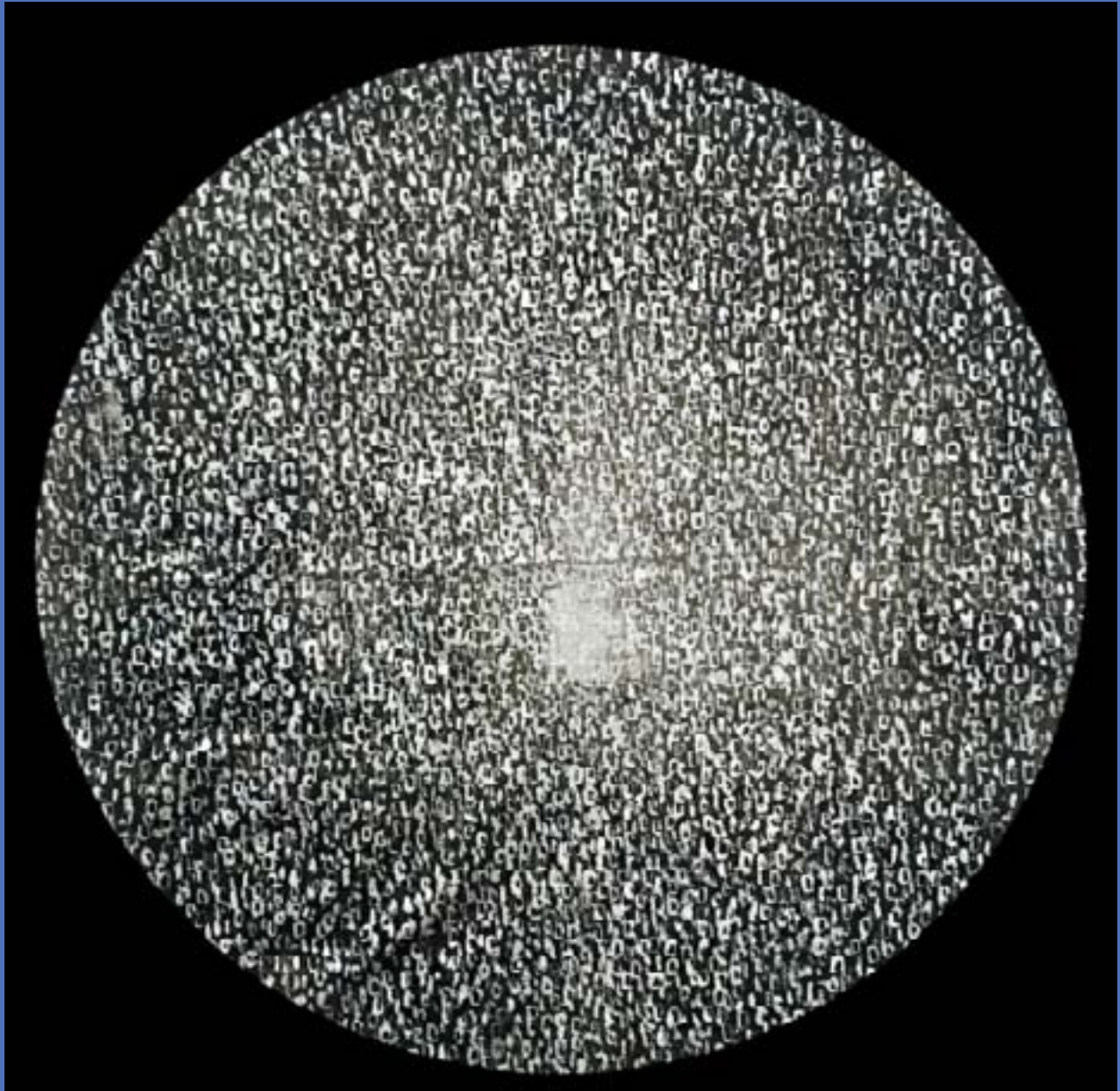


*infinite\_1* metallic acrylic paint on sheer cotton 40 x 40cm(framed) 2015

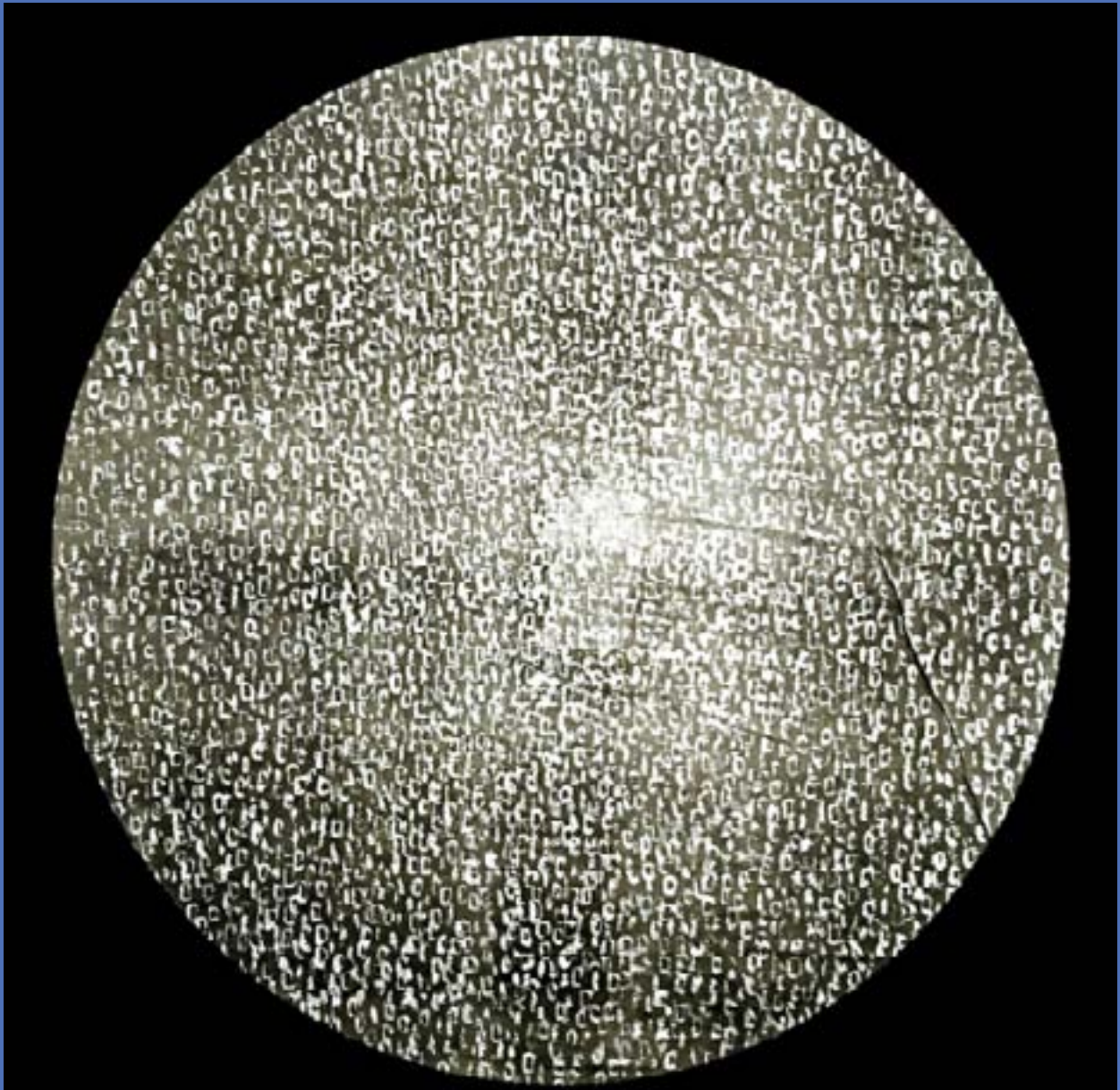


*infinite\_2* metallic acrylic paint on sheer cotton 40 x 40cm(framed) 2015



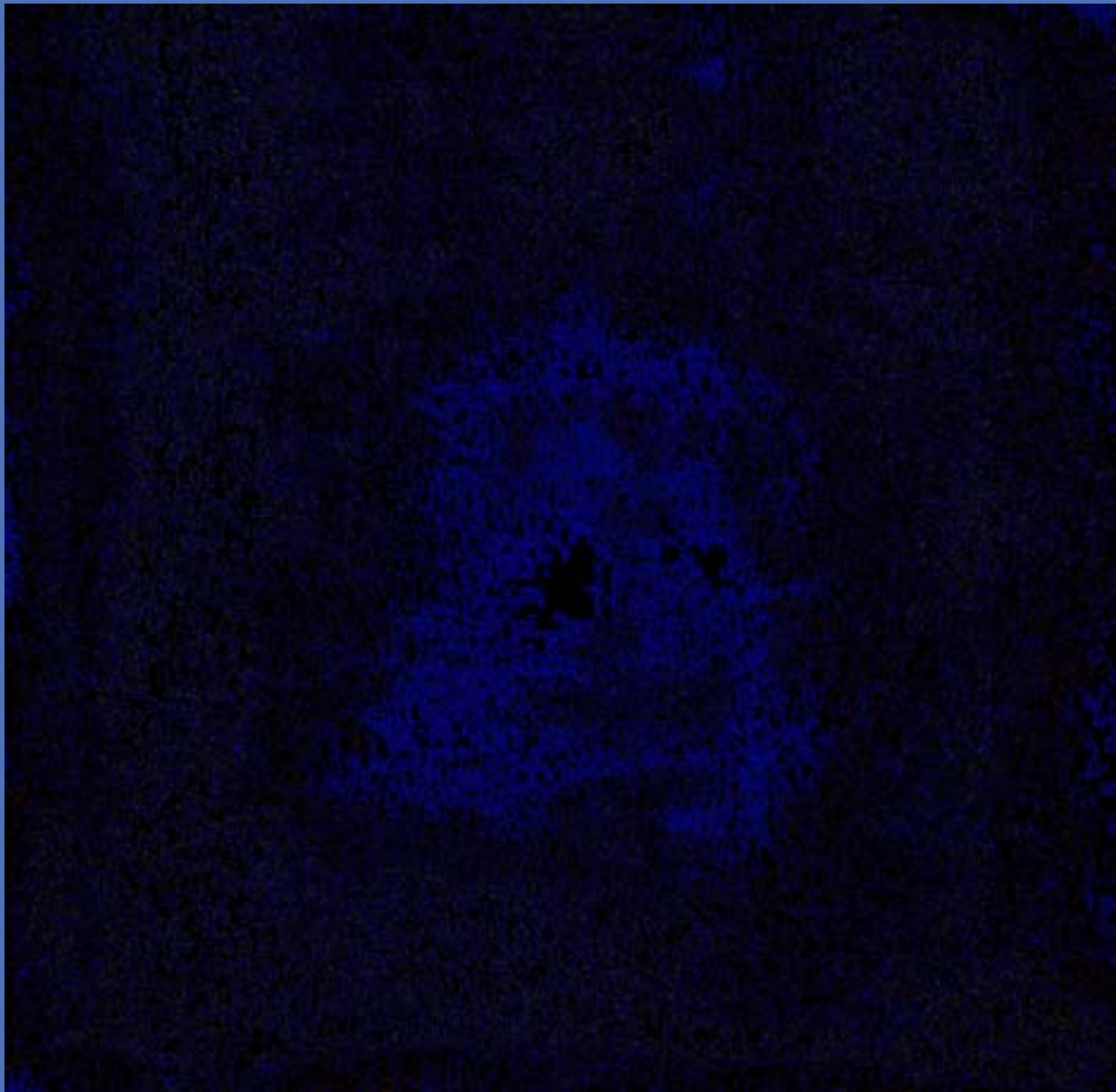


*infinite\_3* metallic acrylic paint on sheer cotton 40 x 40cm(framed) 2015



*infinite\_4* metallic acrylic paint on sheer cotton 40 x 40cm(framed) 2015





*aether01\_40\_2014* (print one of one) giclée print on Canson Archival Platine Fibre Rag

310gsm dry mounted

on a gate board 100 x 100cm 2014





*aether01\_43\_2014* (print one of one) giclée print on Canson Archival Platine Fibre Rag

310gsm dry mounted

on a gate board 100 × 100 cm 2014



*aether01\_45\_2014* (print one of one) giclée print on Canson Archival Platine Fibre Rag

310gsm dry mounted

on a gate board 100 x 100 cm 2014



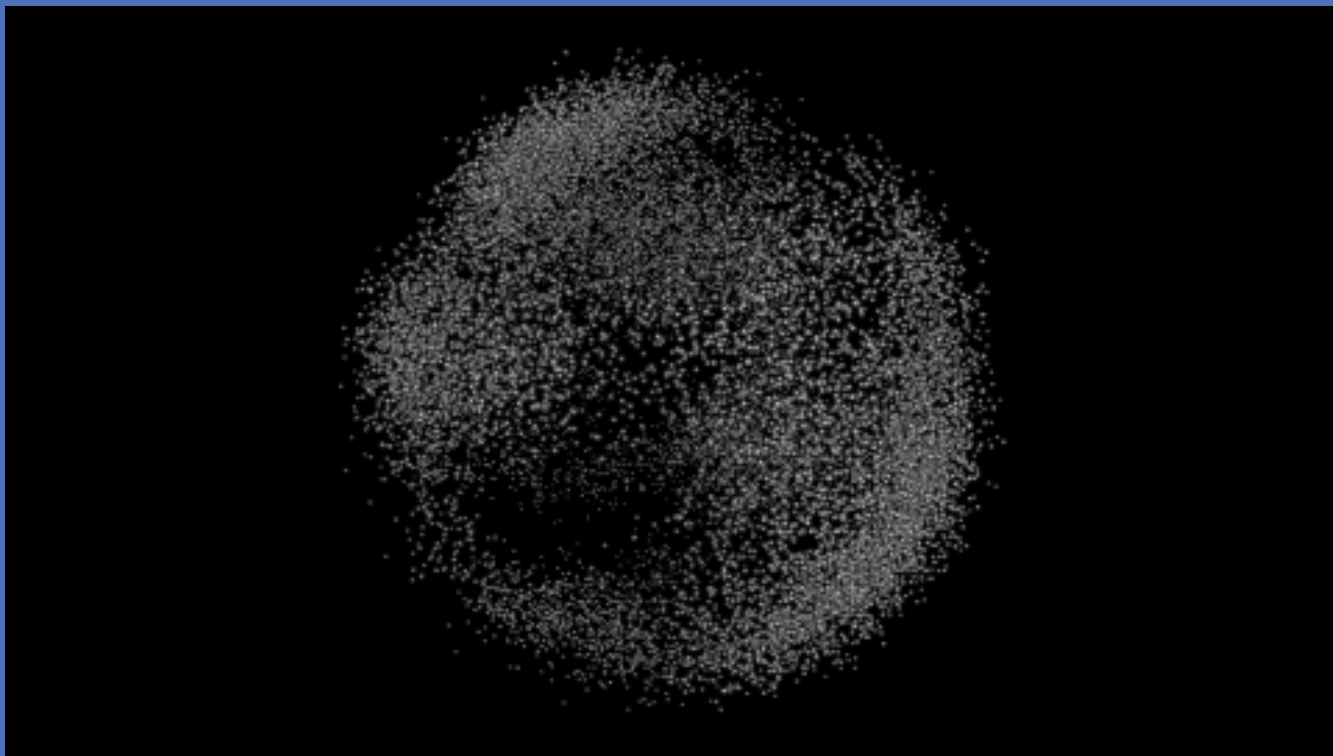


*spacetime-sublime\_73\_2015* giclée print on Silver Rag 310gsm dry mounted  
on a gate board 100 x 100cm 2015

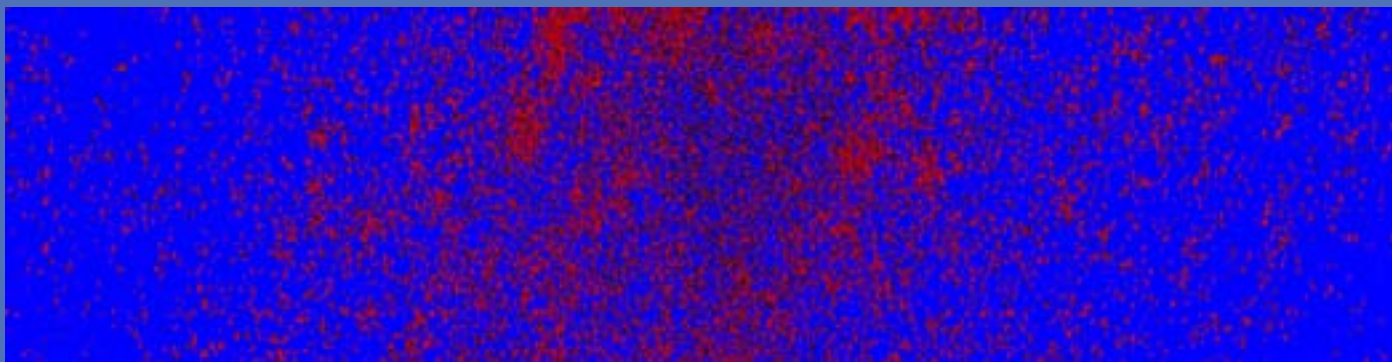


*spacetime-sublime\_74\_2015* giclée print on Silver Rag 310gsm dry mounted  
on a gate board 100 x 100cm 2015





*binary\_01\_sublime* Computer Graphic Video (still) 2015



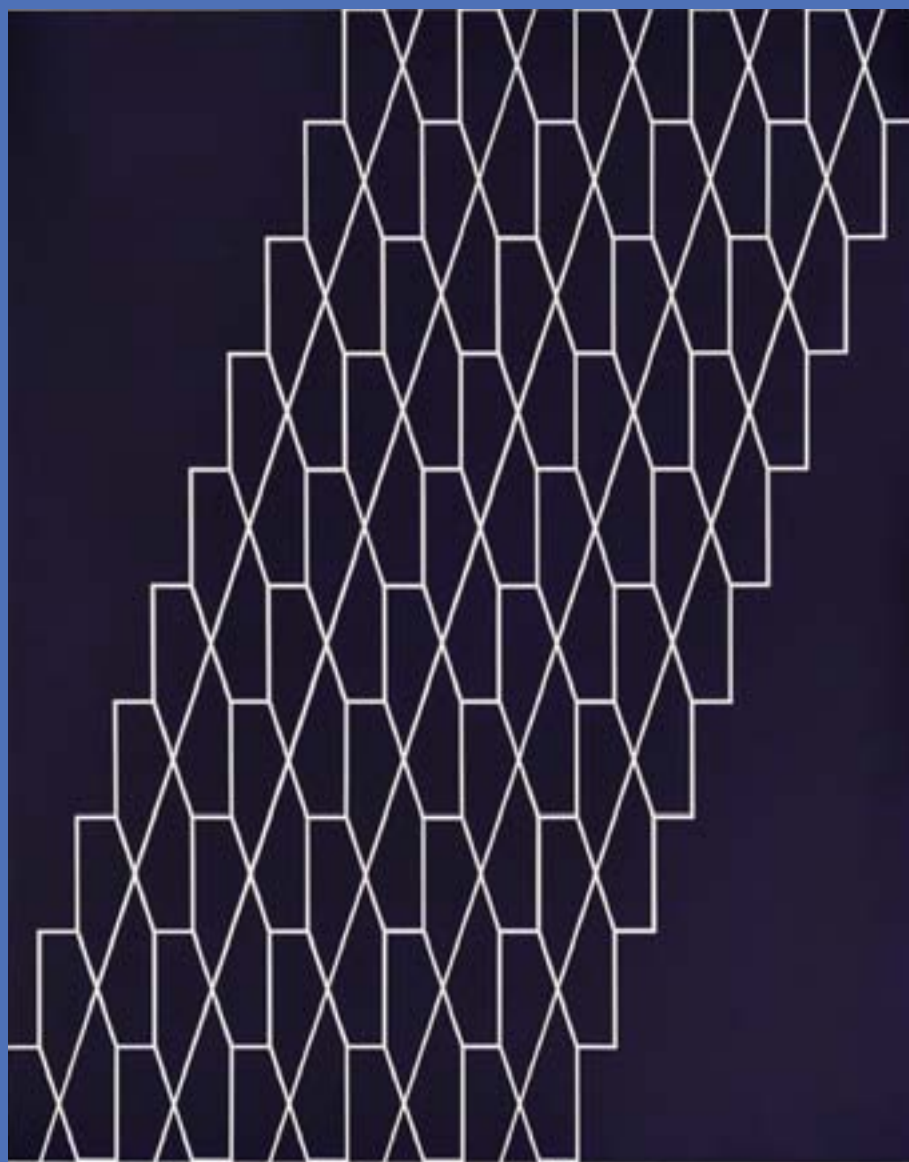
*space\_sublime\_25\_2015* giclée print on Silver Rag 310gsm

dry mounted on a gate board 100 x 252cm 2015

# ADRIAN McDONALD

"The ideal forms of geometry, like those of harmony in music, have an aesthetic and metaphysical dimension that is capable of touching the most essential part of our being in the world."

Adrian McDonald completed a PhD in Visual Arts at the Sydney College of the Arts. This is his second exhibition at Annandale Galleries.



*Pavane*, 61 x 76cm, flashe on claybord, 2010





*Cave Painting*, Acrylic on Clayboard, 90 cm diameter 2015

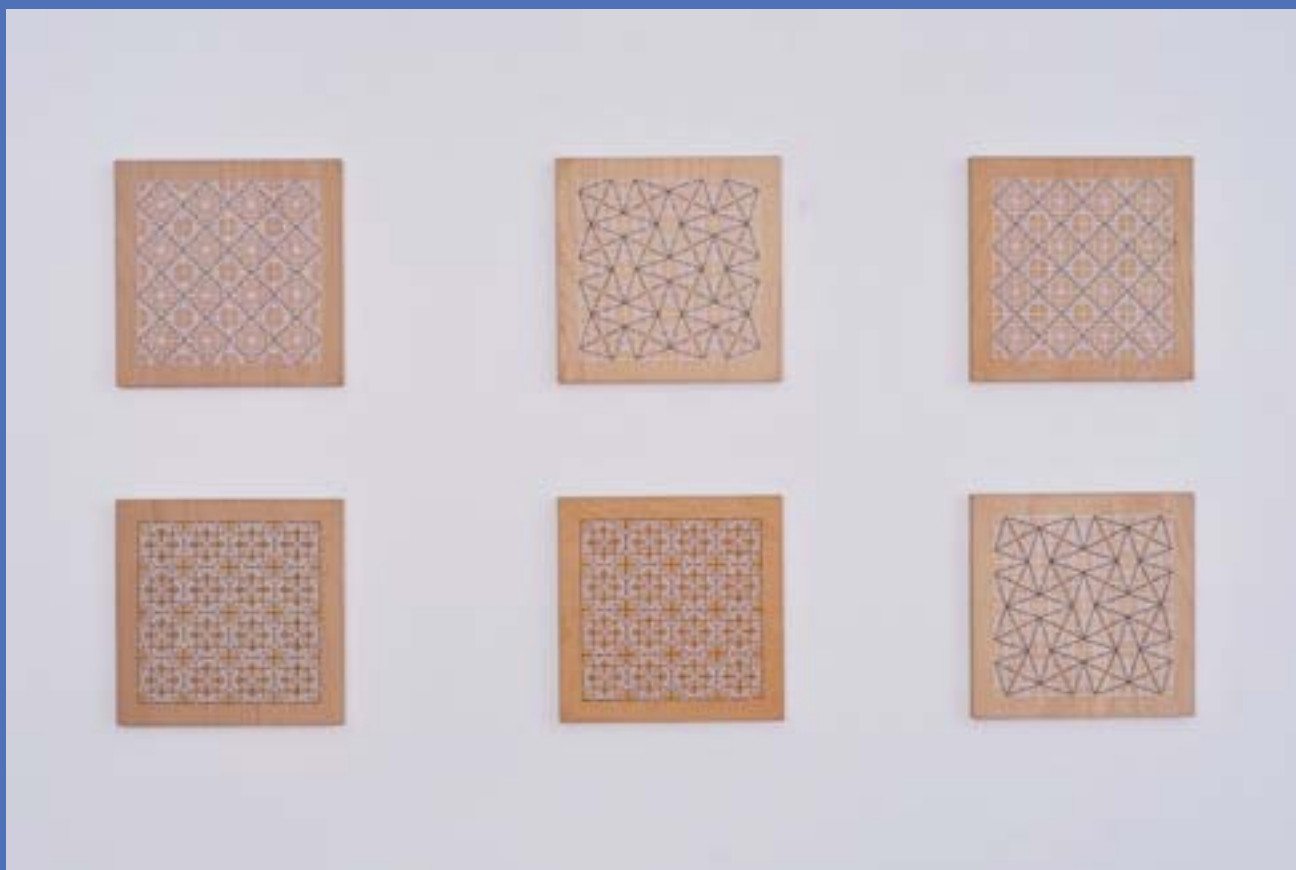


*Black Sun*, Acrylic on Ply, 40 x 40 cm 2015

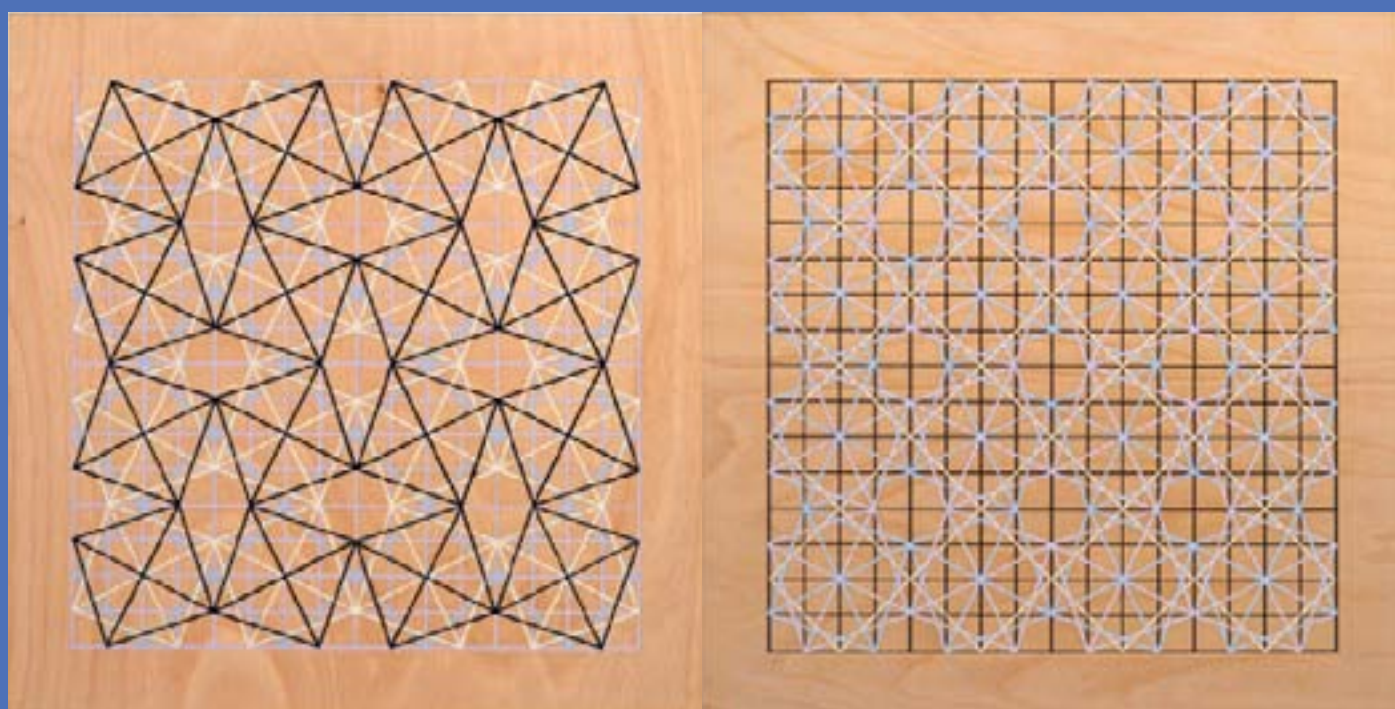


*Black Desert Series (Tetraktys), 76 x 76cm, acrylic on claybord, 2009*

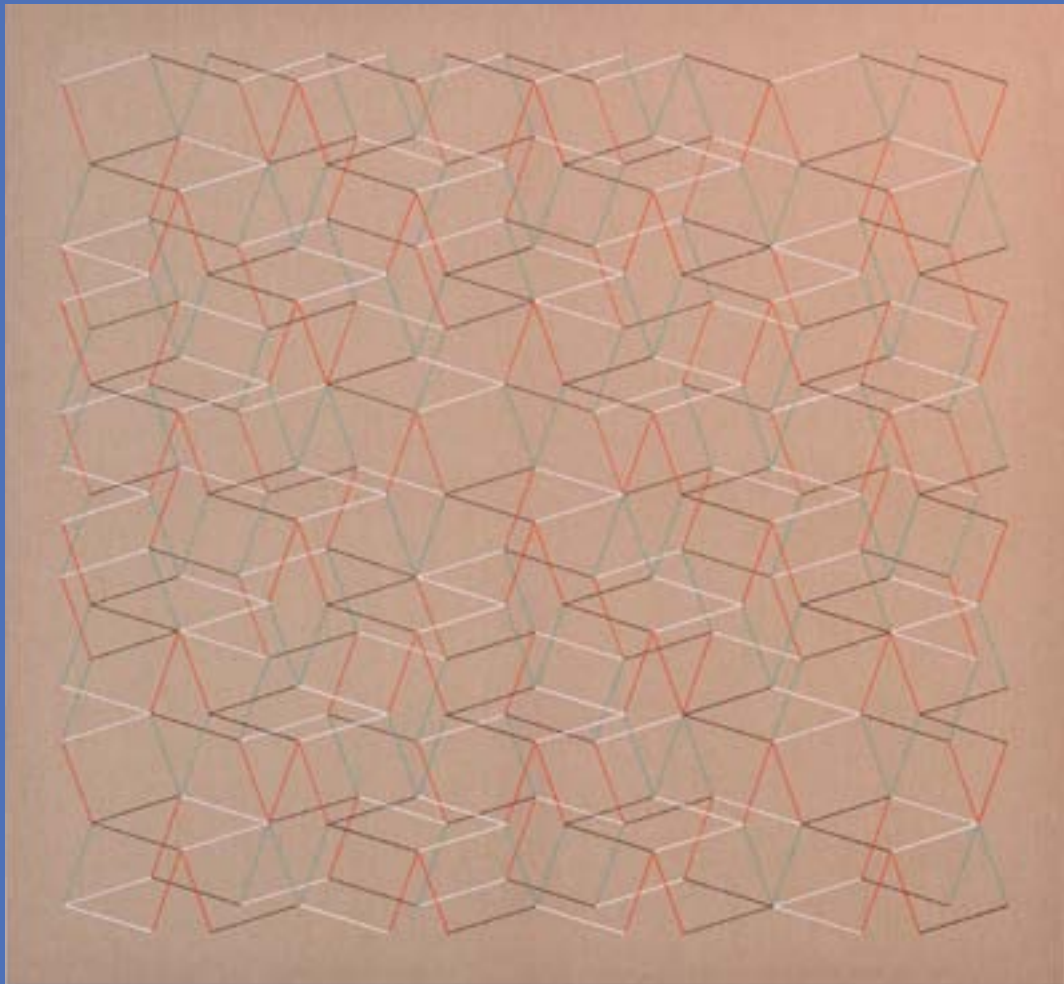




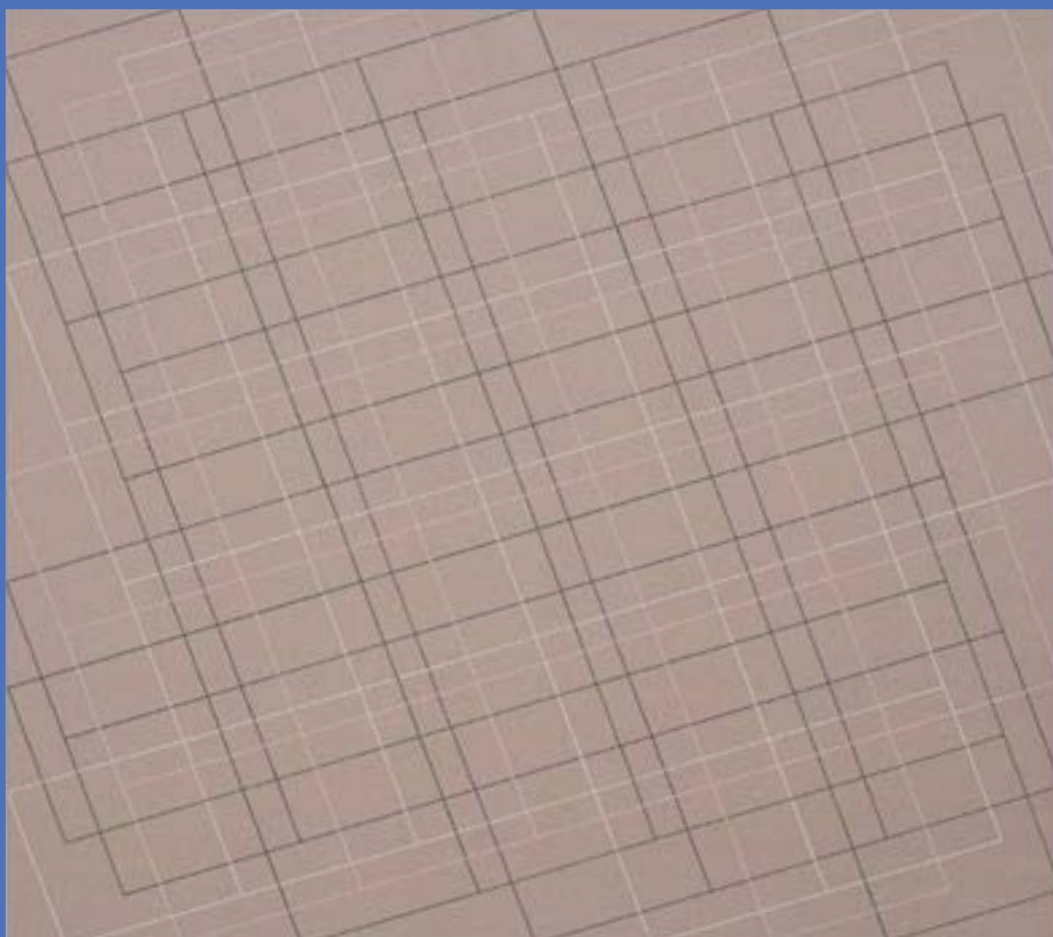
*Hours of the Day*, 6 x (40 x 40cm), acrylic on ply, 2012-3



*Hours of the Day*, 40 x 40cm, acrylic on ply, 2012-3



*Harlequin*, 180 x 180cm, Flashe on linen, 2014



*Stack, Flashe on linen, 182 x 182 2015*