

ANNANDALE GALLERIES

110 Trafalgar Street Annandale Sydney NSW 2038 AUSTRALIA
Tel (61-2) 9552 1699 Fax (61-2) 9552 1689 Email annangal@ozemail.com.au



PRESS RELEASE

FOR IMMEDIATE RELEASE

2/18

WILLIAM KENTRIDGE

TRIUMPHS AND LAMENTS and *LULU*

7 March - 14 April 2018

Opening Night 7 March , 6:30 - 8:30pm

Original multi – panel large etchings, linocuts, lithographs, film



Triumph of Bacchus 2016 164 x 153.5 cm Lift Ground Aquatint etching on 100% Hemp Phumani handmade paper

WILLIAM KENTRIDGE is one of the world's best-loved and most influential artists. ANNANDALE GALLERIES are delighted to be exhibiting nearly forty new works in a variety of graphic media. Kentridge is recognized as one of the most innovative makers of original graphics over

the last two decades. The show is divided into three sections covering all spaces at Annandale.

TRIUMPHS AND LAMENTS is a massive installation that opened in Rome in April 2016. Kentridge had a frieze of procession images constructed 550 metres long by up to 13 metres high on the wall along the banks of the Tiber. The frieze tells the story of Rome from its founding to the present day. A couple of years in conception and months to install, this momentous project was virtually unprecedented in imagination and scale as a work of public art. The opening coincided with the day recognized as the day Rome was founded and included nearly a hundred dancers, musicians and singers for three performances to celebrate the launch. The frieze is still on display but meant to slowly fade away over the next couple of years.

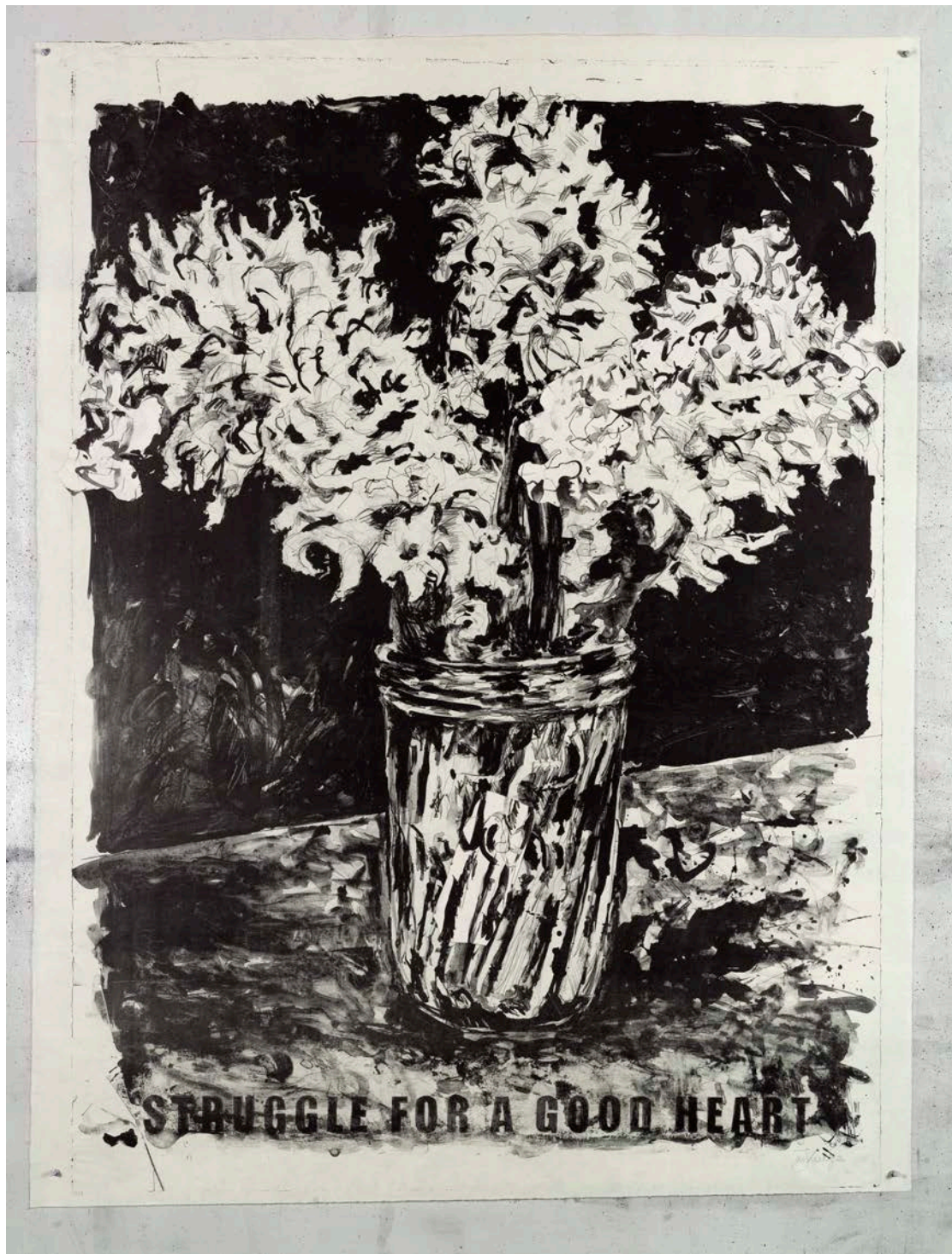
The works in this exhibition include five large multi-panel lift ground aquatint etchings that echo some of the key images in the installation in Rome. There is a film on view of the memorable processions and the opening in Rome.



Four Figures 2017 100 x 179 cm Linocut on BFK Reeves Velin 300 gsm by MK and Artist

LULU is an Opera commissioned by the Metropolitan Opera in New York and directed in 2016-2017 by WILLIAM KENTRIDGE. It was also staged in Amsterdam and London. Everything about the opera was an extension of Kentridge's work as a visual artist, overflowing with images and projected on to every available surface of the opera sets.

The works in this exhibition are derived from important and visually stimulating images and characters in the opera.
LANDSCAPE/STILL LIFE - the front room at Annandale will be devoted to miscellaneous new images and include landscapes around the Kentridge studio in Johannesburg as well as birds, flowers and animals in various media and sizes.



Bunch of Flowers in a Vase 2017 | 69 x 128 cm Lithograph on Korean paper

This will be the ninth solo exhibition by WILLIAM KENTRIDGE at ANNANDALE GALLERIES since 1995. This long-standing relationship with Annandale has been fruitful and crucial to his profile in Australia. He had a major survey at the Museum of Contemporary Art Sydney in 2004, his *FIVE THEMES* exhibition curated by the Museum of Modern Art NYC

showed at the Museum of the Moving Image in Melbourne in 2012. He participated in the Sydney Biennale in 1996, 2000 and 2008.

WILLIAM KENTRIDGE will be the subject of an exhibition at the Art Gallery NSW opening in August 2018 and he is directing the opera *WOZZECK* at the SYDNEY OPERA HOUSE in January 2019. A further exhibition of sculpture, graphic work and film will be at Annandale starting in November 2018. His work is widely collected by all State galleries and the National Gallery of Australia and is represented in most major National Museums in Europe, America, Japan and China.

Do not miss this opportunity to see the latest works by this extraordinary artist. For further press, information or visuals visit our website or contact the gallery.